



CONTENT

2
2
3
4
4
6
9
12
12
13
14
15
15
16
18
18
20
23
23
25
26

ESG

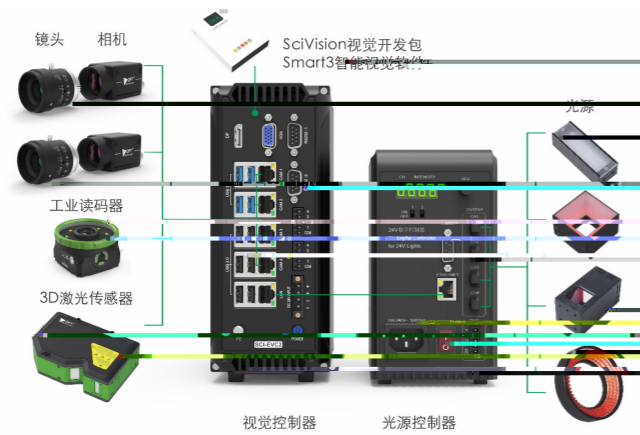
688686.SH

2006

1,825

"

ESG



ESG

		B2B

GRI Standards

ESG
8 ESG

ESG

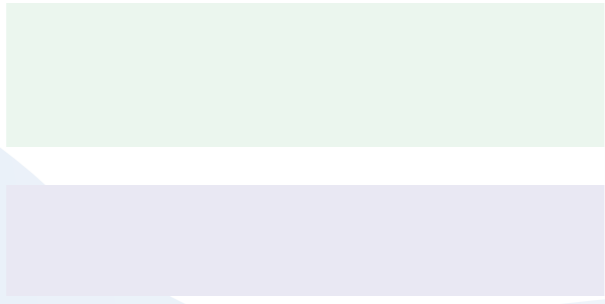
	-E	-S	-G
		.	.
		.	.
		.	.
		.	.

2025

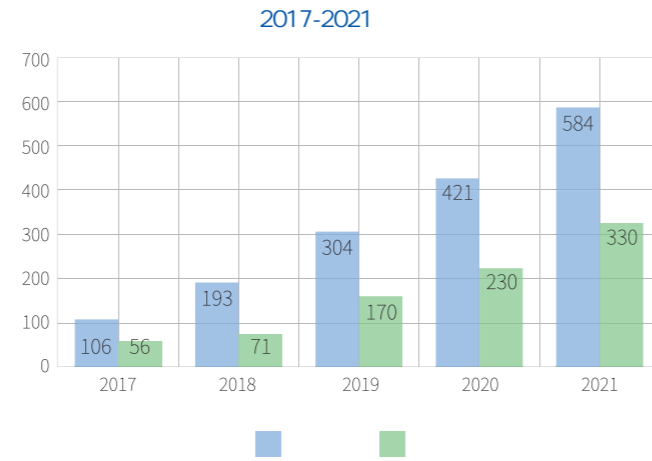
3D

5

4.0



2021
64
21
9
6
30
25
73
200
2



T19001-2016/ISO9001:2015

	DFM	· DFM
	PFMEA	
		·
		·
		· BOM
		· /
		·
		· SN
		· 4 3 72
		·
		· ISO
		· / ISO / /

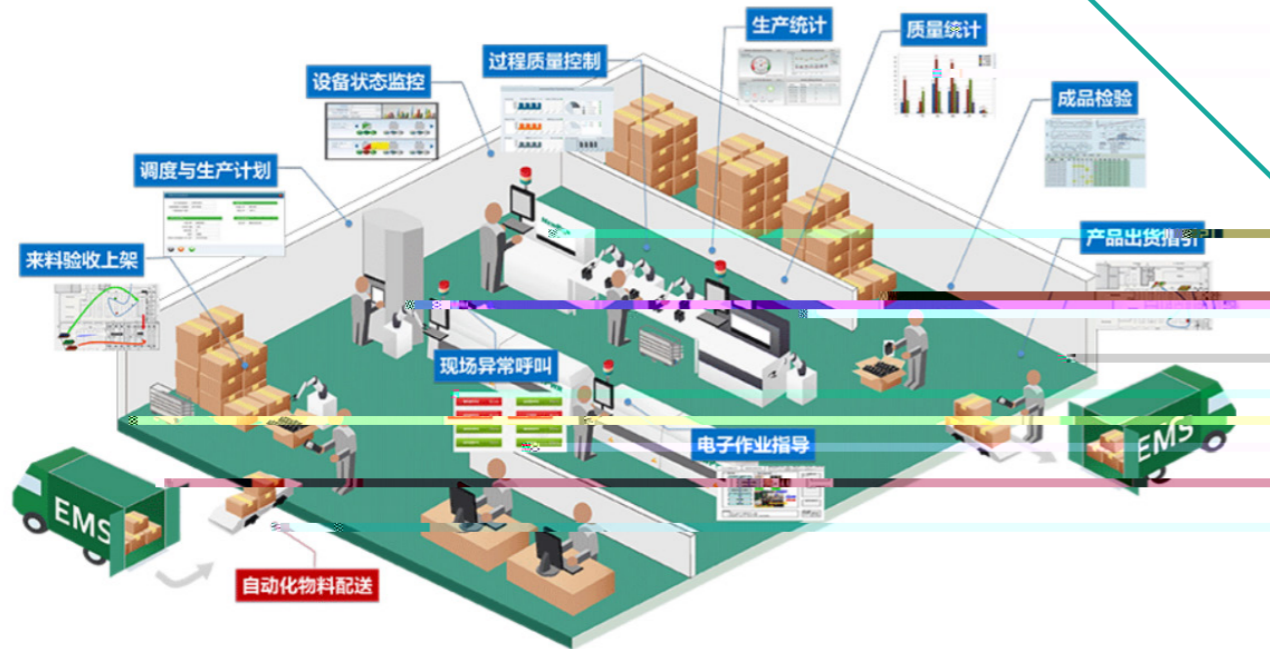
2021		
2021		
2021	500	-- 321
2021		
2021		
2021		
2020		
2020		
2020		
2020		
2019		
2019		
2019	2019	-
2019	2019 20	-
2019	2019 20	-
2017		
2016		

MES/WMS

2021

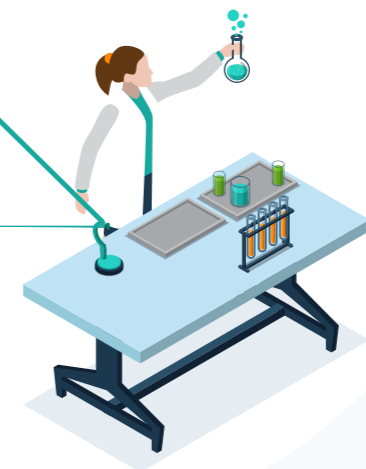
/

MES WMS



			MSDS
		IOC	
	HSF	HSF	
		24	

3



LED

8

	1

A B C

2021

LED

8

51

1

B

30%

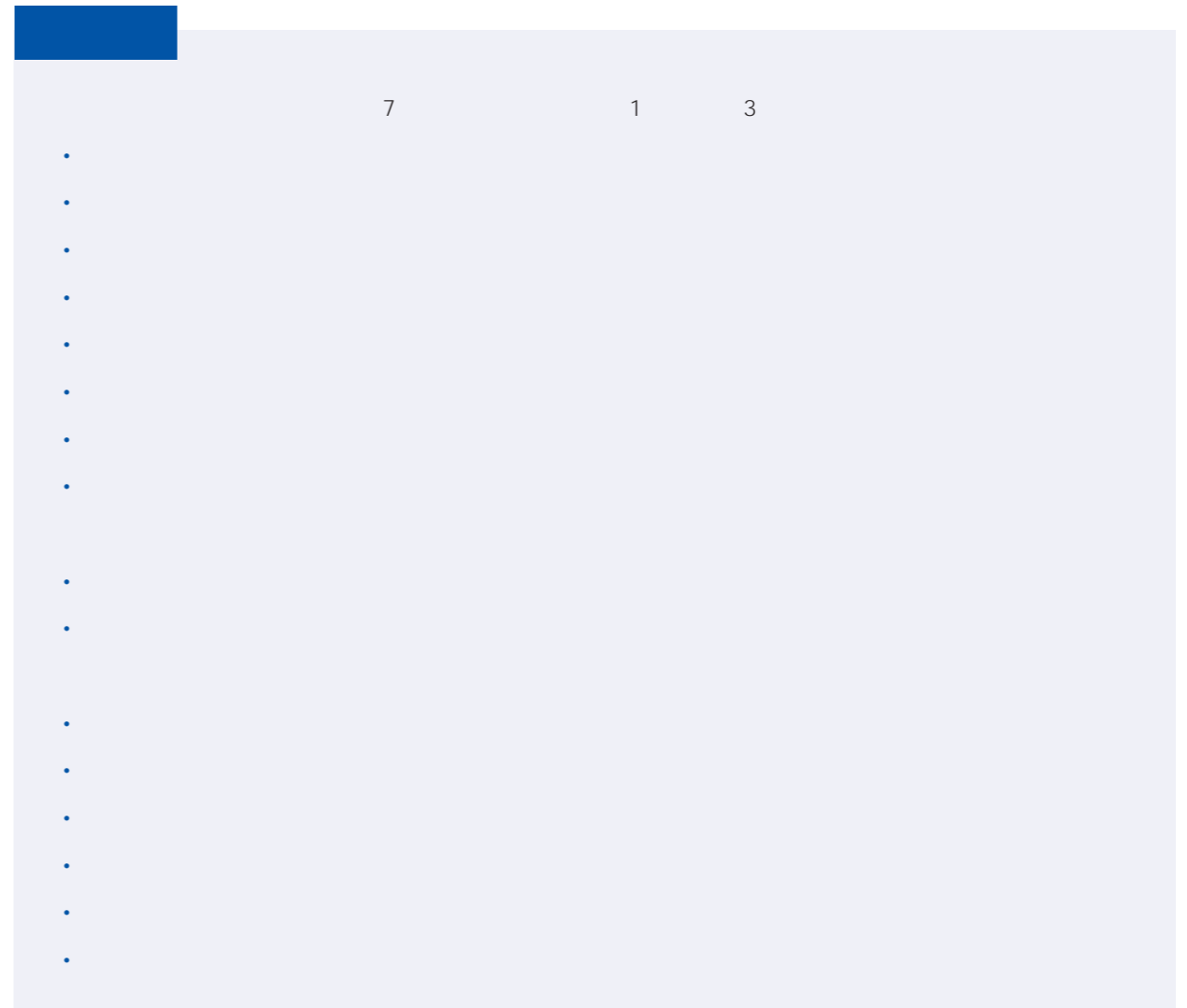
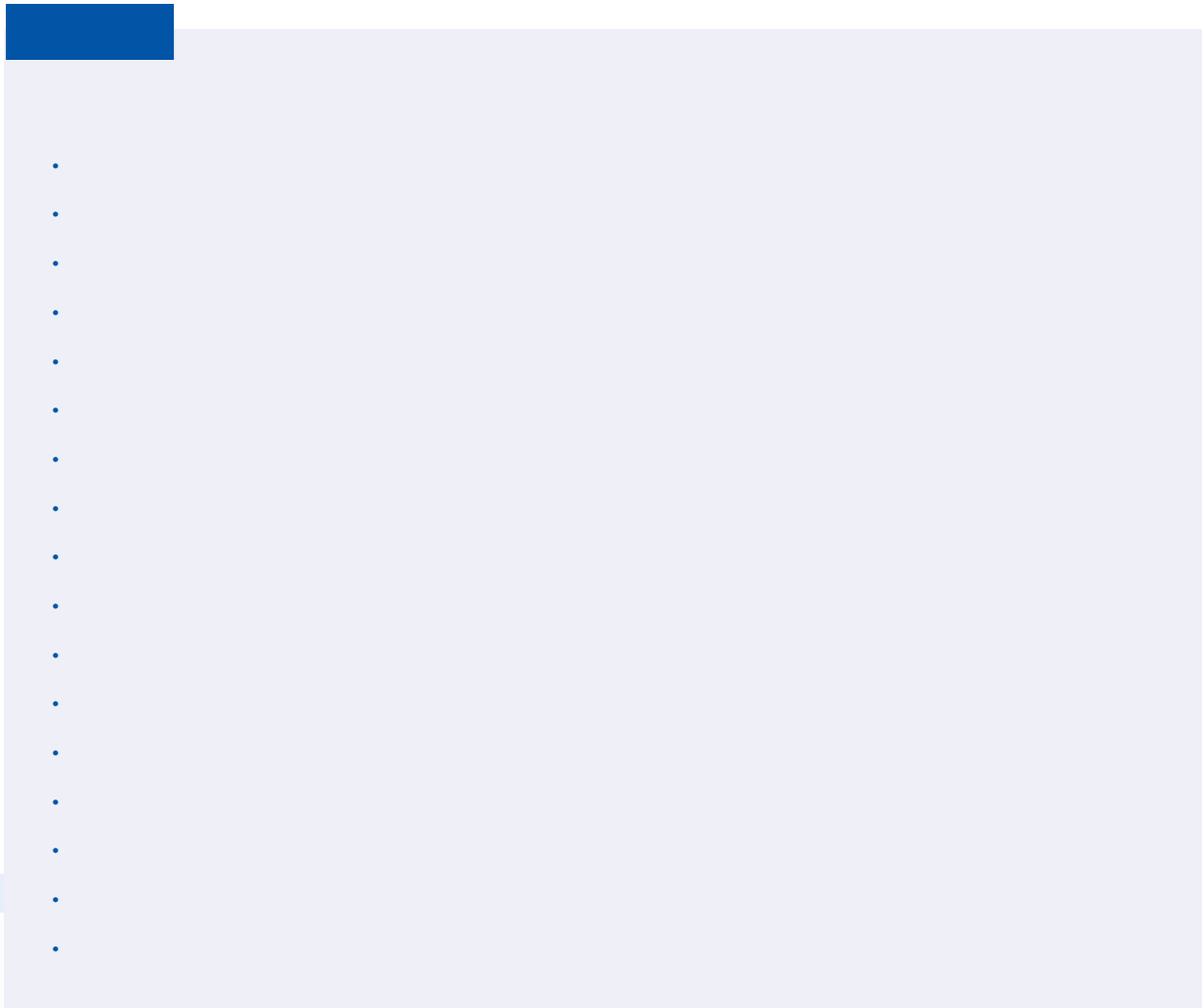
13

A

ISO14001

2021

2021



2021

688686

2021 1 1 2021 12 31

2 —

info@optmv.com

